

HOW CAN YOU WORK OUT PERSONAL DATA FIELDS FOR AN SAP SYSTEM IN SUPPORT OF GDPR?

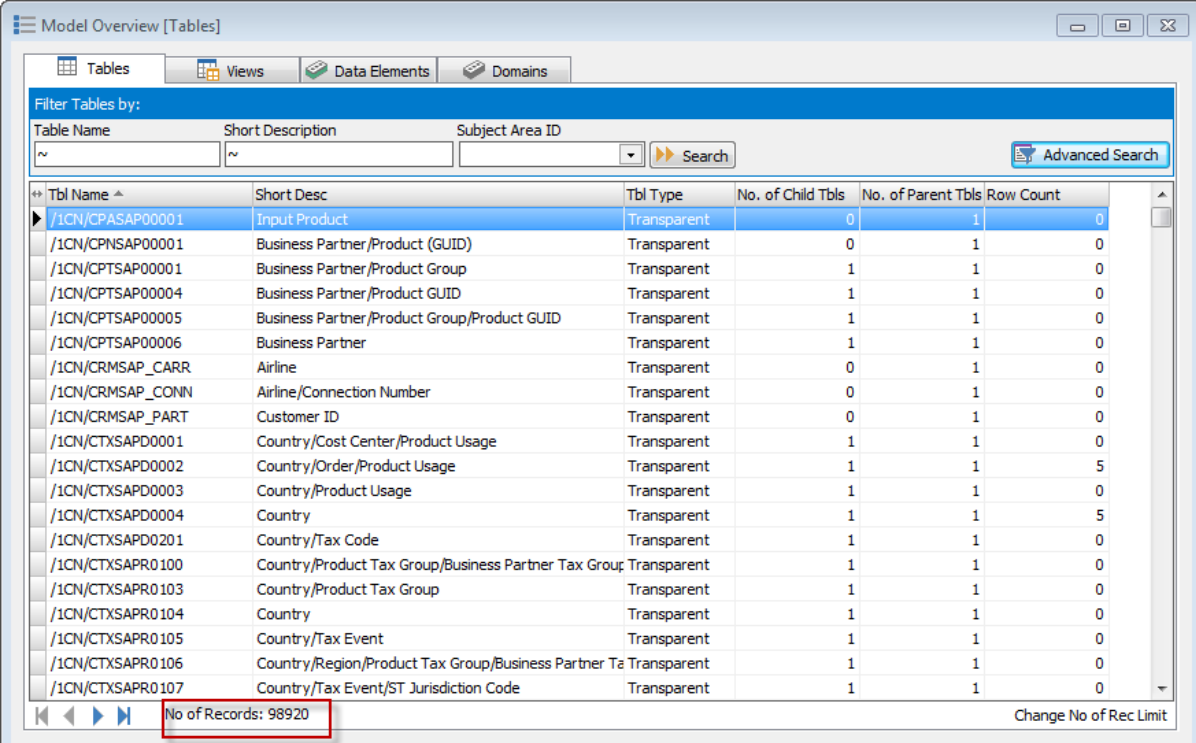
[Silwood Technology](#) has launched five GDPR Starter Packs for major application packages, including SAP, JD Edwards, Microsoft Dynamics 2012, Oracle E-Business Suite and Siebel.

Working out which tables store personal data that needs to be reviewed for GDPR is a challenge in any environment, but particularly so where the system is one or more of the major application packages. The following example describes how to use the tool [Safyr](#) to 'scope' the potential tables that store 'relevant' personal data in an SAP system. In this case we are looking for tables which store 'Date of Birth' information. However, the process would work for any data which comes under the general definition of Personal Data. ([Article 4 – Definitions, Section 1](#) of the Regulations defines the scope of data covered).

Of course many SAP systems have been customised so rather than providing a reference model, Safyr is more effective and useful because it extracts metadata from the application as implemented – including customisations.

Worked example: finding personal data in SAP

The screenshot below shows a list of tables from a typical SAP system which has been extracted into Safyr, in this case just short of 100,000 tables, which is around the number in most such systems.



Tbl Name	Short Desc	Tbl Type	No. of Child Tbls	No. of Parent Tbls	Row Count
/1CN/CPASAP00001	Input Product	Transparent	0	1	0
/1CN/CPNSAP00001	Business Partner/Product (GUID)	Transparent	0	1	0
/1CN/CPTSAP00001	Business Partner/Product Group	Transparent	1	1	0
/1CN/CPTSAP00004	Business Partner/Product GUID	Transparent	1	1	0
/1CN/CPTSAP00005	Business Partner/Product Group/Product GUID	Transparent	1	1	0
/1CN/CPTSAP00006	Business Partner	Transparent	1	1	0
/1CN/CRMSAP_CARR	Airline	Transparent	0	1	0
/1CN/CRMSAP_CONN	Airline/Connection Number	Transparent	0	1	0
/1CN/CRMSAP_PART	Customer ID	Transparent	0	1	0
/1CN/CTXSAPD0001	Country/Cost Center/Product Usage	Transparent	1	1	0
/1CN/CTXSAPD0002	Country/Order/Product Usage	Transparent	1	1	5
/1CN/CTXSAPD0003	Country/Product Usage	Transparent	1	1	0
/1CN/CTXSAPD0004	Country	Transparent	1	1	5
/1CN/CTXSAPD0201	Country/Tax Code	Transparent	1	1	0
/1CN/CTXSAPR0100	Country/Product Tax Group/Business Partner Tax Group	Transparent	1	1	0
/1CN/CTXSAPR0103	Country/Product Tax Group	Transparent	1	1	0
/1CN/CTXSAPR0104	Country	Transparent	1	1	0
/1CN/CTXSAPR0105	Country/Tax Event	Transparent	1	1	0
/1CN/CTXSAPR0106	Country/Region/Product Tax Group/Business Partner Tax Group	Transparent	1	1	0
/1CN/CTXSAPR0107	Country/Tax Event/ST Jurisdiction Code	Transparent	1	1	0

No of Records: 98920

We can do a search across all these tables to find any that contain a field with the 'business name' of the field containing the string 'Date of Birth'.

This reduces the list of nearly 100,000 tables to just 84. So there are 84 tables that have a field with the description of the field containing 'date of birth'.

Tbl Name	Short Desc	Tbl Type	No. of Child Tbls	No. of Parent Tbls	Row Count
ATAFS_SIGNATORY	Annual Financial Statement Austria Signatory informatio	Transparent	0	2	0
BP000	Business Partner Master (General Data)	Transparent	16	20	0
BUT000	BP: General data I	Transparent	332	20	489
BUT000_TD	BP: General Data I, Shadow Table Time Dependency	Transparent	0	20	0
BUT000_TDS	BP: General Data I, Shadow Table Time Dependency	Transparent	0	20	0
BUTADRSEARCH	Mass Search Help: Business Partner	Transparent	0	3	0
DFMCA_TF_WHT_L	Line Item Table of Withholding Tax	Transparent	0	0	0
ECAMIOPRBUPA	IS-U: Parked Document: Business Partner Data	Transparent	0	7	0
HRP1702	DB Table for Infotype 1702	Transparent	0	12	0
HRP5582	DB Table for Infotype 5582	Transparent	0	6	0
ICLPART	Participants	Transparent	8	10	0
ICLPOLPD	Covered Driver in Policy Snapshot	Transparent	0	5	0
ICLX_PARTICIPANT	Error Table for Participants with XI Input	Transparent	0	2	0
ICSPART	Participant in Claim	Transparent	0	8	0
ICSPOLPD	Covered Driver in Policy Snapshot	Transparent	0	5	0
J_IIE_RCT	Table for Storing contract details(Ireland)	Transparent	0	3	0
JGTGPNR	IS-M: Central Business Partner Table	Transparent	149	36	0
JJTAM	IS-M/AM: Media Contact Person	Transparent	2	29	0
KNVK	Customer Master Contact Partner	Transparent	5	20	46
LFA1	Vendor Master (General Section)	Transparent	670	27	79

On the right of the list is a Row Count which gives the number of records in each table. Quite a few have zero – and this is not unusual in a SAP system as SAP delivers a full set of features and tables that may or may not be actually used by a given customer.

The query on ‘date of birth’ can be refined to filter out any of the tables with no data and this gives just 10 tables (this may be very different in another SAP system, depending on what features and modules of SAP the customer uses).

The screenshot shows the SAP Model Overview [Tables] interface. At the top, there are tabs for Tables, Views, Data Elements, and Domains. Below these is a filter section with fields for Table Name, Short Description, and Subject Area ID, along with a Search button and an Advanced Search button. The main area contains a table with the following data:

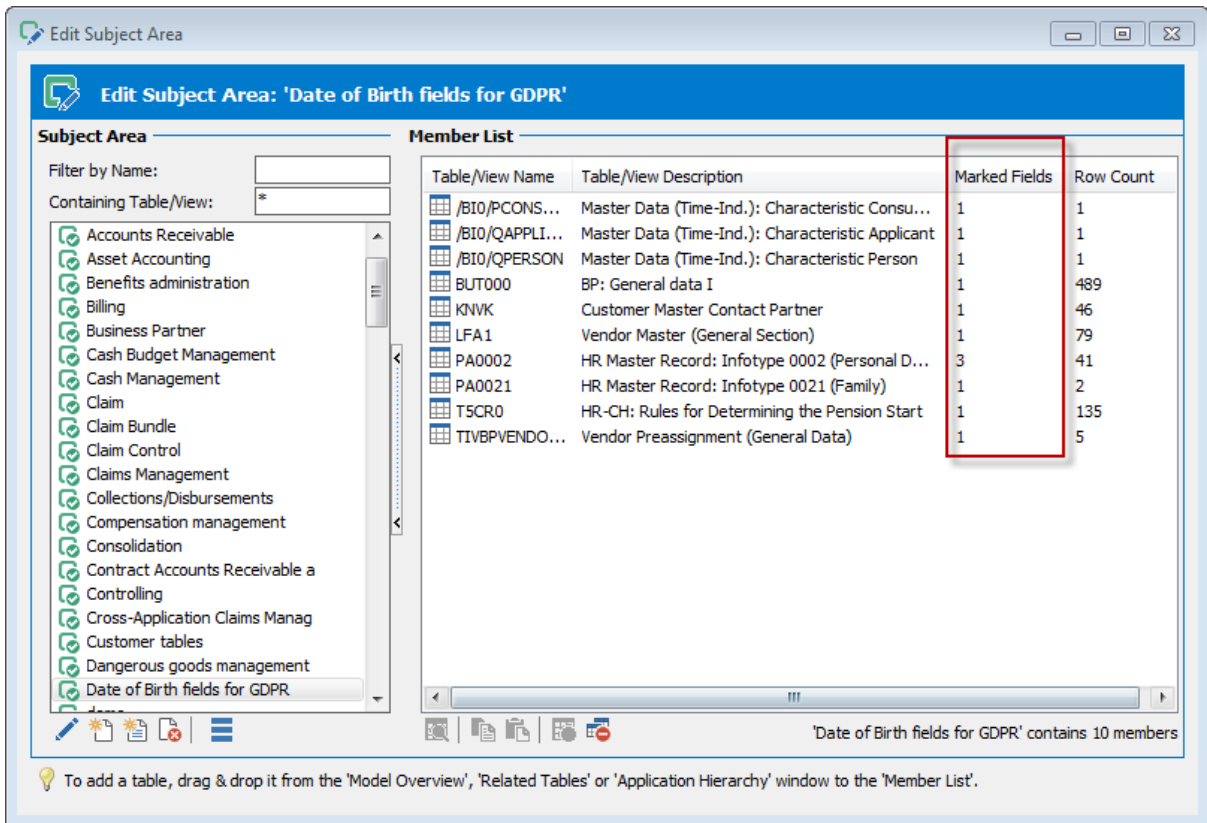
Tbl Name	Short Desc	Tbl Type	No. of Child Tbls	No. of Parent Tbls	Row Count
/BIO/PCONSUMER	Master Data (Time-Ind.): Characteristic Consumer	Transparent	0	0	1
/BIO/QAPPLICANT	Master Data (Time-Ind.): Characteristic Applicant	Transparent	0	0	1
/BIO/QPERSON	Master Data (Time-Ind.): Characteristic Person	Transparent	0	0	1
BUT000	BP: General data I	Transparent	332	20	489
KNVK	Customer Master Contact Partner	Transparent	5	20	46
LFA1	Vendor Master (General Section)	Transparent	670	27	79
PA0002	HR Master Record: Infotype 0002 (Personal Data)	Transparent	0	8	41
PA0021	HR Master Record: Infotype 0021 (Family)	Transparent	2	8	2
TSCR0	HR-CH: Rules for Determining the Pension Start	Transparent	1	3	135
TIVBPVENDORGEN	Vendor Preassignment (General Data)	Transparent	0	20	5

At the bottom left of the table, a red box highlights the text 'No of Records: 10'. At the bottom right, there is a 'Change No of Rec Limit' button.

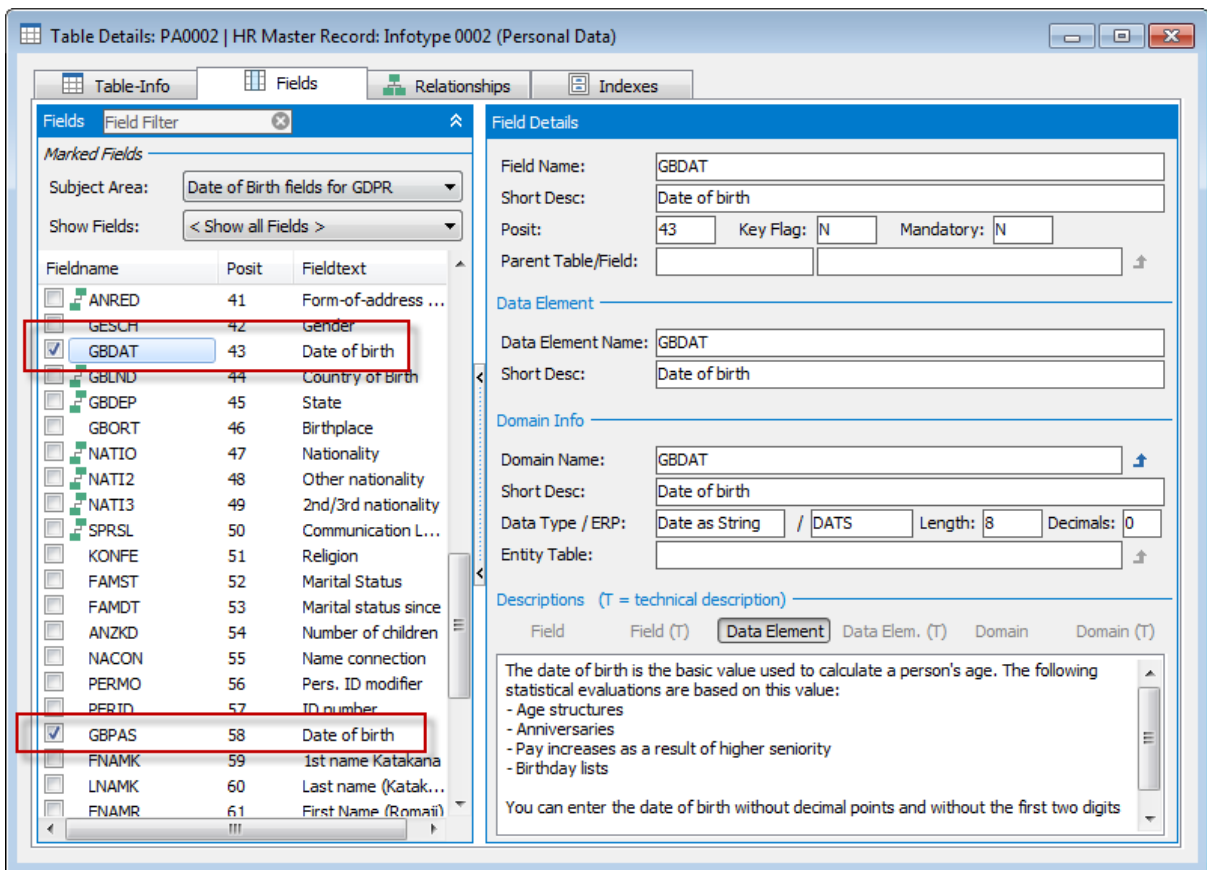
Having found a set of tables that contain likely Personal Data attributes, the results can be recorded using what Safyr calls a Subject Area. This is like a folder where we can group tables, and can be refined further by identifying individual fields.

It's easy to select the tables and add them to a Subject Area – and there is an option to ‘mark’ those fields that meet the selection criteria used (in this case ‘date of birth’ fields).

So the result is a group of tables that contain a field with the string ‘date of birth’ in the ‘business’, name and containing data.



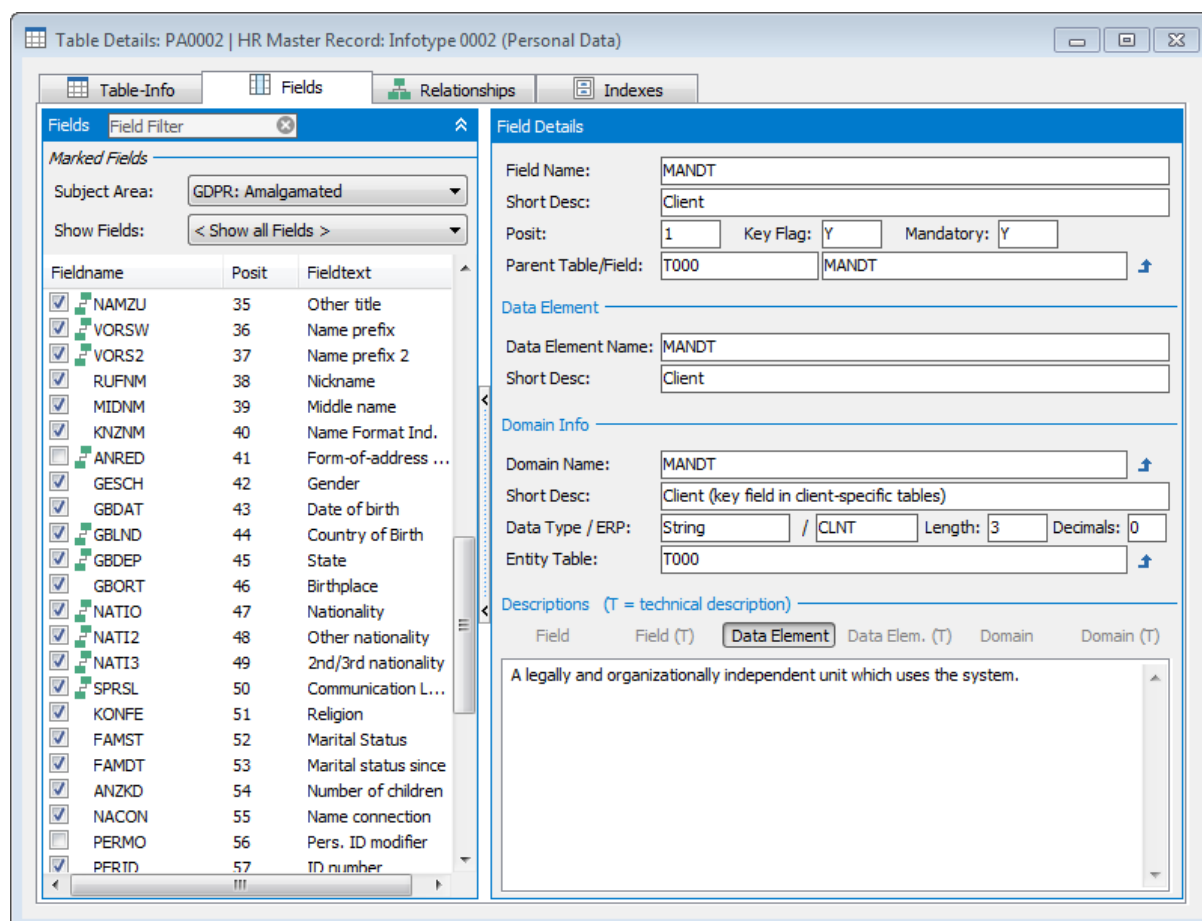
The 'Marked Fields' column shows how many fields on each table meet the search criteria. In the example above, table PA0002 has 3 such fields. The table details can be displayed to show the individual fields.



Two of the 3 fields are visible in this example. We could do this same process for other Personal Data fields until we had assembled a set of GDPR Subject Areas that represent all the Personal Data categories that need to be assessed.

Safyr then has features for merging these Subject Areas to create a consolidated list of Personal Data items. This brings together the Personal Data fields for each of the categories (Birth, Address, Credit Card Number....) into one integrated set.

Here is the same table – HR Master Record show above – with the merged fields from these categories.



Having identified and marked the Personal Data fields using the method described above, a next step might be to make the attributes for these fields easily available to a wider audience.

Safyr has a number of formats that can be exported, one of the most popular for GDPR being Excel. It's easy to select exactly what properties to include in the spreadsheet.

Conclusion

Identifying candidate Personal Data attributes is but one step of any GDPR strategy. In the case of large application packages like SAP it can be a very challenging first step.

And a final thought. Unlike Y2K, GDPR is not a one-time job. There is a responsibility on each organisation to monitor their storage of personal data on an on-going basis.

To book a free Safyr trial, please visit <https://www.silwoodtechnology.com/contact/free-trial-of-safyr/>