

DATA SHEET

Accelerated metadata discovery:

- Rapidly document the metadata in your Oracle eBusiness Suite systems including customisations
- Find and curate Personal Data attributes for GDPR and other regulatory requirements
- Discover metadata for data warehouse and analytics projects
- Identify metadata for ingestion into data catalog and governance platforms

Main benefits

- Gain more from your investment in Oracle eBusiness Suite
- Improved business trust in data
- Faster access to critical data for analytics, governance and compliance
- Reduce time and cost of data discovery
- Reduced reliance on scarce technical resource, or consultants



Safyr® simplifying metadata discovery for Oracle eBusiness Suite

The metadata challenge

Oracle eBusiness Suite presents you with a number of significant metadata related challenges when you need to incorporate it into critical data intensive initiatives.

These include:

- Large data model which comprises thousands of tables and attributes
- High degree of customisation limiting the value of templates and documentation
- The naming convention in the RDBMS System Catalog means that the metadata provided these is of limited value for discovery
- No relationships between tables defined in the System Catalog
- Limited metadata discovery tools available for data analysts and stewards

These hurdles can significantly hinder the use of Oracle eBusiness Suite in IT projects and programs which rely on accurate metadata, delaying benefits and increasing the time and cost of delivery.

What is Safyr?

Safyr delivers a unique solution to these challenges.

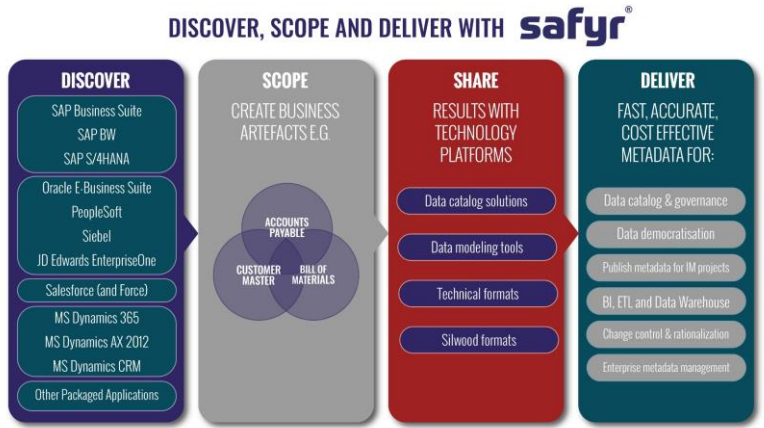
Your data analysts use it to connect and extract metadata including customisations from the Oracle eBusiness Suite Data Dictionary tables. Metadata retrieved is stored in a Safyr repository.

Then they have access to a wide range of functions for searching, analysing and curating the metadata using business English terminology.

The results can be shared with a variety of other tools and in a number of industry standard formats.

What projects is Safyr used with?

- Data Catalog & Data Governance
- Compliance programs e.g. GDPR
- Data warehouse, ETL, & analytics
- Application rationalisation
- Data migration & integration
- Master data governance



SAFYR..... SINGLE SOURCE OF TRUSTED APPLICATION METADATA

DATA SHEET

Safyr works with:

- SAP
- SAP S/4HANA
- SAP BW
- SAP BW/4HANA
- Oracle eBusiness Suite
- JD Edwards
- Siebel
- PeopleSoft
- Salesforce
- Microsoft Dynamics 365, AX 2012 and CRM

'ETL for METADATA'

For applications not included above Safyr can be configured to map their metadata into its own metamodel. Please contact us to discuss your particular packaged systems.

Pre-configured content

Business contextual metadata content is provided for a number of packages including Microsoft, SAP, JD Edwards and others.

Export results

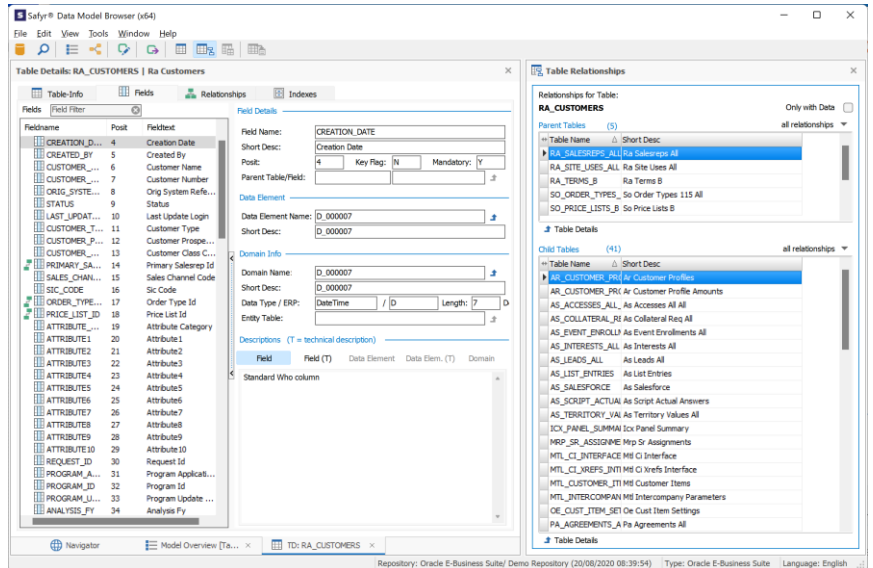
Results from Safyr can be exported to data governance and metadata management platforms (e.g. Collibra, Alation, Solidatus, Infogix, Erwin DI, Informatica EDC and more); data modelling tools (e.g. SAP PowerDesigner, Erwin DM, ER/Studio);, and other technologies



silwoodtechnology.com

© 2022, Silwood Technology Ltd

Technology overview



Example screenshot from Safyr for Oracle eBusiness Suite

Safyr extracts metadata from the Oracle eBusiness Suite Data Dictionary. Importantly, this includes customisations so the application is being used as implemented.

This way both logical and physical names and descriptions are retrieved, together with the relationships between tables.

This information is stored in a Safyr repository for ongoing work.

Safyr's analysis features allow for easy navigation through complex data structures. Its powerful search and filtering and application capabilities provide for rapid identification of the tables and related tables needed in the context of the task at hand.

Users can view the details of any table including fields, descriptions, attributes and indexes. Results can be visualised in Safyr or exported to other tools.

Key Features

Metadata extracted includes:

Tables	Fields
Customisations	Views
Physical names	Logical names
Data elements	Descriptions

- Identifies Parent/Child relationships
- Advanced features for search, filtering, scoping, analysis and visualisation of metadata
- Comparison of specific results sets or complete application instances with granular control over items to be compared
- Performs table row count during extraction to allow filtering on tables containing data and reduce size of results sets
- Export results to modelling, integration and metadata management tools

Contact us

T: +44 1344 876553

E: info@silwoodtechnology.com