

DATA SHEET

Accelerated metadata discovery for:

- Microsoft Dynamics 365*

Main benefits

- Improved business trust in data
- Faster access to critical data for analytics, governance and compliance
- Reduced cost of data discovery
- Reduced reliance on scarce technical resource, or external consultants

* Safyr for Microsoft Dynamics 365 is compatible with Dynamics modules whose metadata is stored in the Microsoft Dataverse.



Safyr® simplifying metadata discovery for Microsoft Dynamics 365

The metadata challenge

Critical IT initiatives and projects such as Data Catalog and Governance, Data Warehouse, Big Data, Master Data Management, ETL, Data Integration and Migration, Data Modelling, Enterprise Architecture and others all share a common challenge.

This is the ability to access, analyse, visualize, curate and share the metadata which are the underlying foundations of the Enterprise Applications which hold much of the data required for these critical initiatives.

With Microsoft Dynamics this can be a significant challenge because of the specific methods required to access and retrieve the metadata from different Dynamics modules.

In addition the lack of information about relationships between tables in the System Catalog and the level of customisation applied can also hinder attempts to understand and use the metadata effectively.

What is Safyr?

Safyr is a unique solution. It extracts metadata from the source Dynamics system, as implemented, and allows it to be analysed and used to accelerate the deliver of your project..

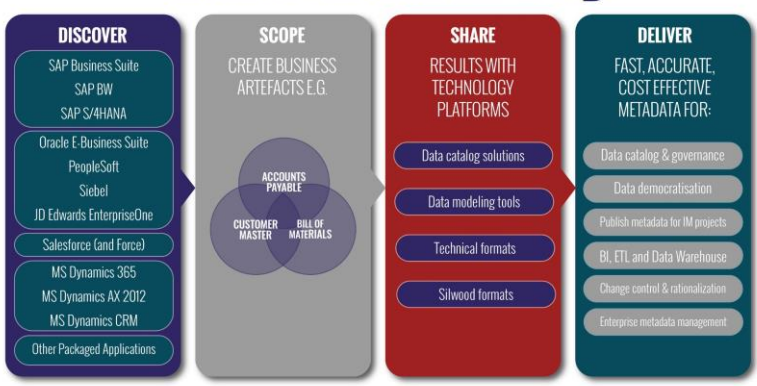
When to consider Safyr

- If you have Microsoft Dynamics, 365 applications and need to understand their data structures for use with other software tools in the context of your project.
- When comprehensive source data or metadata analysis is critical for project delivery.
- When it is taking too long or costing too much to accurately find the data in complex Dynamics (or other) applications.

Benefits

- Gain more from your investment in Dynamics and accelerate project delivery.
- Reduce the cost, time and risk associated with accessing and using complex metadata.

DISCOVER, SCOPE AND DELIVER WITH safyr®



SAFYR..... SINGLE SOURCE OF TRUSTED APPLICATION METADATA

DATA SHEET

Technology overview

Safyr supports:

- SAP
- SAP S/4HANA
- SAP BW
- SAP BW/4HANA
- Oracle E-Business Suite
- JD Edwards
- Siebel
- PeopleSoft
- Salesforce
- Microsoft Dynamics 365, AX 2012 and CRM

'ETL for METADATA'

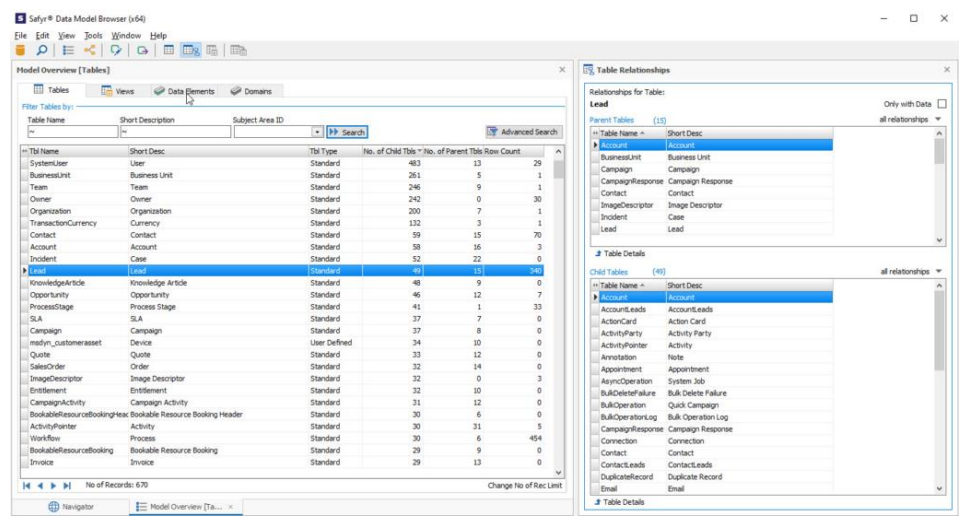
For applications not included above Safyr can be configured to map their metadata into its own metamodel. Please contact us to discuss your particular packaged systems.

Pre-configured content

Business contextual metadata content is provided for a number of packages including Microsoft, SAP, JD Edwards and others.

Export results

Results from Safyr can be exported to data governance and metadata management platforms (e.g. Collibra, Alation, Solidatus, Infogix, Erwin DI, Informatica EDC and more); data modelling tools (e.g. SAP PowerDesigner, Erwin DM, ER/Studio);, and other technologies



View of tables and related tables in Dynamics 365

Safyr extracts metadata from the Microsoft Dynamics Data Dictionary. Importantly, this includes customisations so the application is being used as implemented.

This way both logical and physical names and descriptions are retrieved, together with the relationships between tables.

This information is stored in a Safyr repository for ongoing work.

Safyr's analysis features allow for easy navigation through complex data structures. Its powerful search and filtering and application capabilities provide for rapid identification of the tables and related tables needed in the context of the task at hand.

Users can view the details of any table including fields, descriptions, attributes and indexes. Results can be visualised in Safyr or exported to other tools.

Key Features

Metadata extracted includes:

- | | |
|----------------|---------------|
| Tables | Fields |
| Customisations | Views |
| Physical names | Logical names |
| Data elements | Descriptions |
- Identifies Parent/Child relationships
 - Advanced features for search, filtering, scoping, analysis and visualisation of metadata
 - Comparison of specific results sets or complete application instances with granular control over items to be compared
 - Performs table row count during extraction to allow filtering on tables containing data and reduce size of results sets
 - Export results to modelling, integration and metadata management tools

Contact us

T: +44 1344 876553
E: info@silwoodtechnology.com