

# DATA SHEET

## Accelerated metadata discovery for:

- Salesforce\*
- Force based applications\*
- Applications from the App Exchange\*

## Main benefits

- Improved business trust in data
- Faster access to critical data for analytics, governance and compliance
- Reduced cost of data discovery
- Reduced reliance on scarce technical resource, or external consultants

\* Safyr is compatible with Salesforce applications whose metadata can be accessed via the Salesforce Enterprise WSDL API



# Safyr® simplifying metadata discovery for Salesforce

## The metadata challenge

Critical IT initiatives and projects such as Data Catalog and Governance, Data Warehouse, Big Data, Master Data Management, ETL, Data Integration and Migration, Data Modelling, Enterprise Architecture and others all share a common challenge.

This is the ability to access, analyse, visualize, curate and share the metadata which are the underlying foundations of the Enterprise Applications which hold much of the data required for these critical initiatives.

With Salesforce systems this can be a significant challenge because of the specific methods required to access and retrieve the metadata and the often significant amount of customisations made to the system.

The lack of sophisticated internal metadata tools within Salesforce can also hinder attempts to understand and use the metadata effectively with other software products.

## What is Safyr?

Safyr is a unique solution. It extracts metadata from your source Salesforce system, as implemented, and allows it to be analysed and used to accelerate the delivery of your data intensive projects.

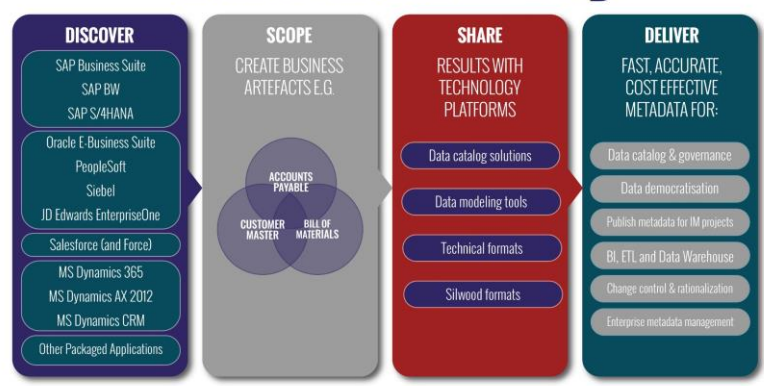
## When to consider Safyr

- If you have significantly customised your Salesforce systems or purchased applications from the AppExchange and need to understand and use their data structures in other products
- When comprehensive source data or metadata analysis is critical for project delivery
- When it is taking too long or costing too much to accurately find the data in complex Salesforce applications

## Benefits

- Gain more from your investment in Salesforce
- Reduce resources needed to access and use metadata

## DISCOVER, SCOPE AND DELIVER WITH safyr®



SAFYR..... SINGLE SOURCE OF TRUSTED APPLICATION METADATA

# DATA SHEET

## Applications

- SAP
- SAP S/4HANA
- SAP BW
- SAP BW/4HANA
- Oracle E-Business Suite
- JD Edwards
- Siebel
- PeopleSoft
- Salesforce
- Microsoft Dynamics 365, AX 2012 and CRM

## 'ETL for METADATA'

For applications not included above Safyr can be configured to map their metadata into its own metamodel. Please contact us to discuss your particular packaged systems.

## Pre-configured content

Business contextual metadata content is provided for a number of packages including Salesforce, SAP, JD Edwards and others.

## Export results

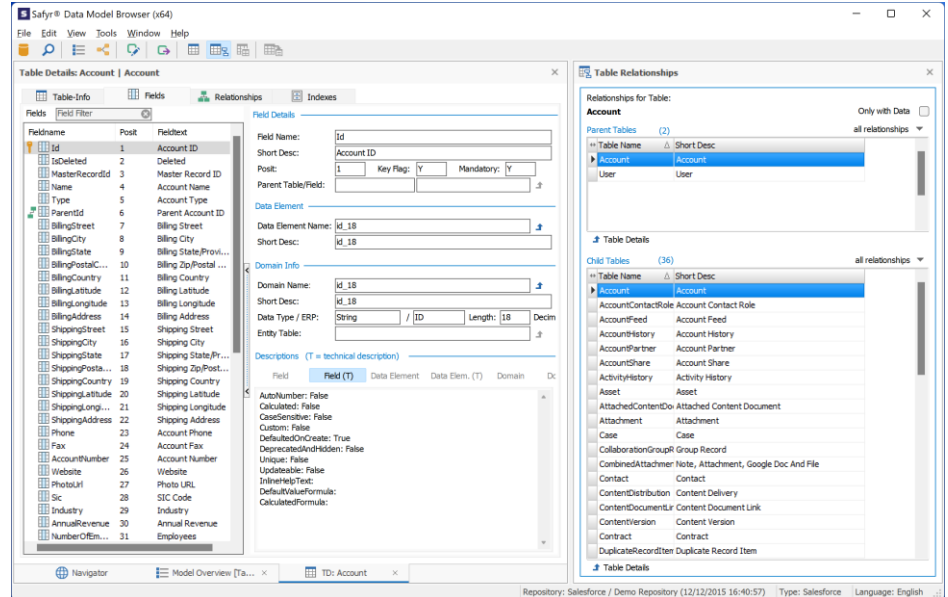
Results from Safyr can be exported to data governance and metadata management platforms (e.g. Collibra, Alation, Solidatus, Infogix, Erwin DI, Informatica EDC and more); data modelling tools (e.g. SAP PowerDesigner, Erwin DM, ER/Studio); and other technologies



[silwoodtechnology.com](http://silwoodtechnology.com)

© 2021, Silwood Technology Ltd

## Technology overview



Safyr extracts metadata from the Salesforce Data Dictionary. Importantly, this includes customisations so the application is being used as implemented.

This way both logical and physical names and descriptions are retrieved, together with the relationships between tables.

This information is stored in a Safyr repository for ongoing work.

## Key Features

### Metadata extracted includes:

- |                |   |
|----------------|---|
| Tables         | Fields                                    |
| Customisations | Logical names                             |
| Physical names | Descriptions                              |
| Data elements  | Field level descriptions in custom tables |
- Identifies Parent/Child relationships
  - Advanced features for search, filtering, scoping, analysis and visualisation of metadata
  - Comparison of specific results sets or complete application instances with granular control over items to be compared
  - Performs table row count during extraction to allow filtering on tables containing data and reduce size of results sets
  - Export results to modelling, integration and metadata management tools

## Contact us

T: +44 1344 876553

E: [info@silwoodtechnology.com](mailto:info@silwoodtechnology.com)